

LIVEU MATRIX

with Dynamic Share

Share your feeds globally
at the click of a button!

The cost-effective alternative
to satellite/fiber distribution



LiveU Matrix makes live content management and distribution simple, reliable, and affordable. Combining a powerful front-end with a reliable IP cloud-based transport layer, LiveU Matrix allows you to share and receive high-quality, low-latency live feeds with broadcasters and other stakeholders around the globe – inside or outside your organization.

Whether you are producing a high-profile event, covering a breaking news situation, or expanding your content options, LiveU Matrix provides access to live events of every scale (local to global). With full customization, you can dynamically control who receives your content, or receive any content that you were granted access to.

DYNAMIC SHARE – A NEW LIVEU MATRIX SERVICE

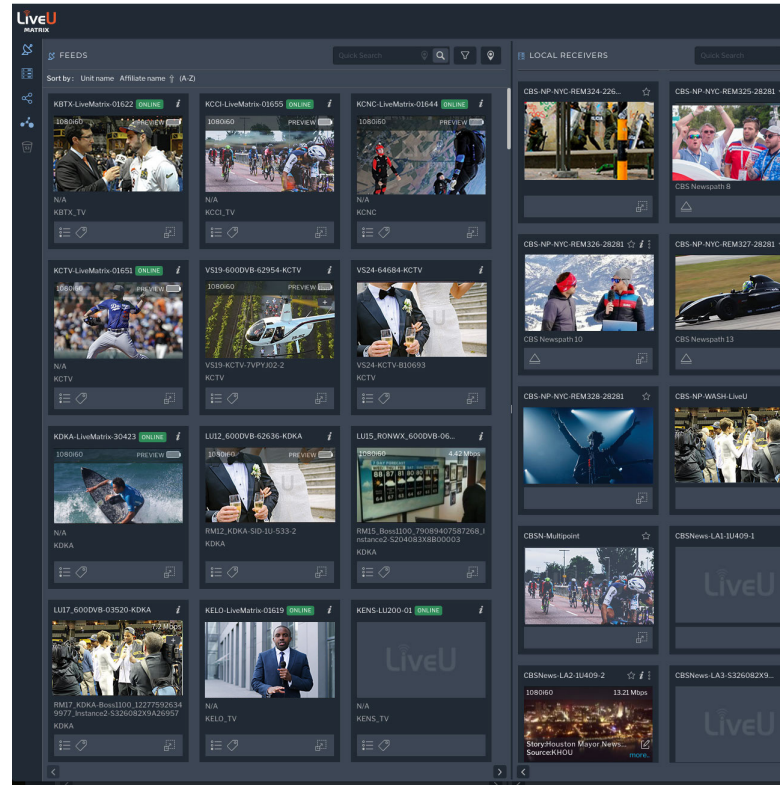
Dynamic Share, powered by the **LiveU Global Directory**, gives you the ability to distribute and receive live content from any LiveU customer using the directory. **With over 4,500 global customers and 30,000 receiving points**, you can easily share content, manage your destinations, and quickly receive content coming from another LiveU customer.



SINGLE, UNIFIED PORTAL FOR ALL YOUR VIDEO SHARING NEEDS

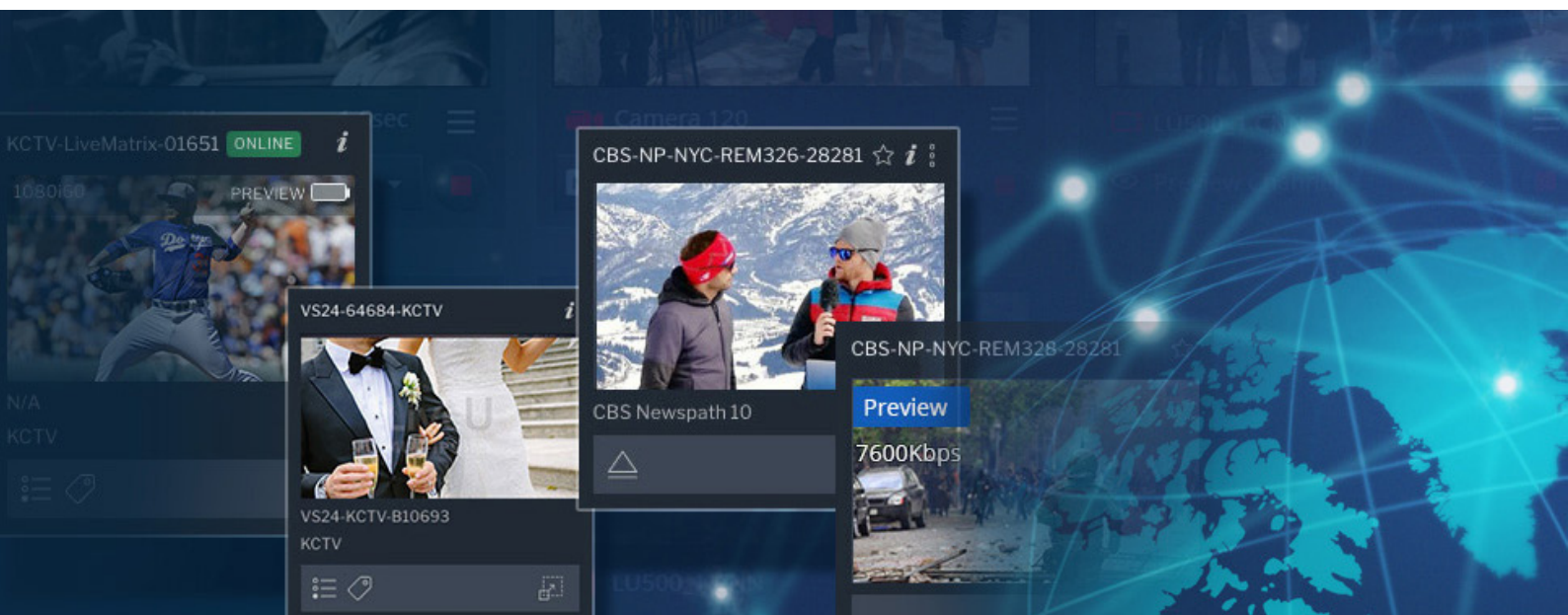
With **Dynamic Share**, powered by the Global Directory, all LiveU customers can access the entire LiveU install base, easily sharing or receiving content from thousands of broadcasters and content producers globally. With a simple click of a button, the LiveU Global Directory lets you instantly grow your exposure and content sharing abilities.

Competitively priced (monthly flat price – not metered), easy-to-use, and flexible, Dynamic Share replaces point to multipoint in LiveU Central and other occasional feed solutions such as LTN, Satellite, Fiber, etc.



DRIVING NEW MONETIZATION OPTIONS

Dynamic Share enables broader coverage of live news and events, allowing you to put a local spin on global news. Beyond expanding your content reach, you can also use the platform to generate new revenue streams. Dynamic Share allows you to easily monetize your content, controlling access to it, as well as its distribution destinations.



KEY ADVANTAGES

- ▶ Select the feed's destinations ad-hoc, using the Global Directory
- ▶ Cut costs by replacing traditional occasional feed solutions such as satellite and fiber
- ▶ Cost-effective delivery method for content contribution and primary distribution
- ▶ Control who gets your content without the need for conditional access, scrambling, and/or encryption
- ▶ Easy to deploy; no additional hardware needed
- ▶ Expand content gathering options
- ▶ Grow your content exposure through the LiveU Matrix platform
- ▶ Alternative to renting satellite capacity
- ▶ Intuitive and easy to use, supporting any distribution scale.



KEY APPLICATIONS

- ▶ Daily & breaking news coverage
- ▶ Studio to studio backhauling and/or contribution
- ▶ Sports & events (produced in SD, HD, and 4K)
- ▶ Live TV/productions for enterprise, government, house of worship, education, entertainment and more
- ▶ Occasional contribution
- ▶ Video streaming & tape payouts
- ▶ Emergency response & disaster relief

www.liveu.tv | www.facebook.com/liveu.fans | www.twitter.com/liveu

LiveU Inc. | 2 University Plaza, Suite 505, Hackensack, New Jersey 07601, USA
Tel: 1-(201)-742-5229 | Contact us to get the best plan: Get.liveu.tv/liveu-360

