



UNIFIED MANAGEMENT PLATFORM FOR EASY PREVIEW AND REMOTE CONTROL

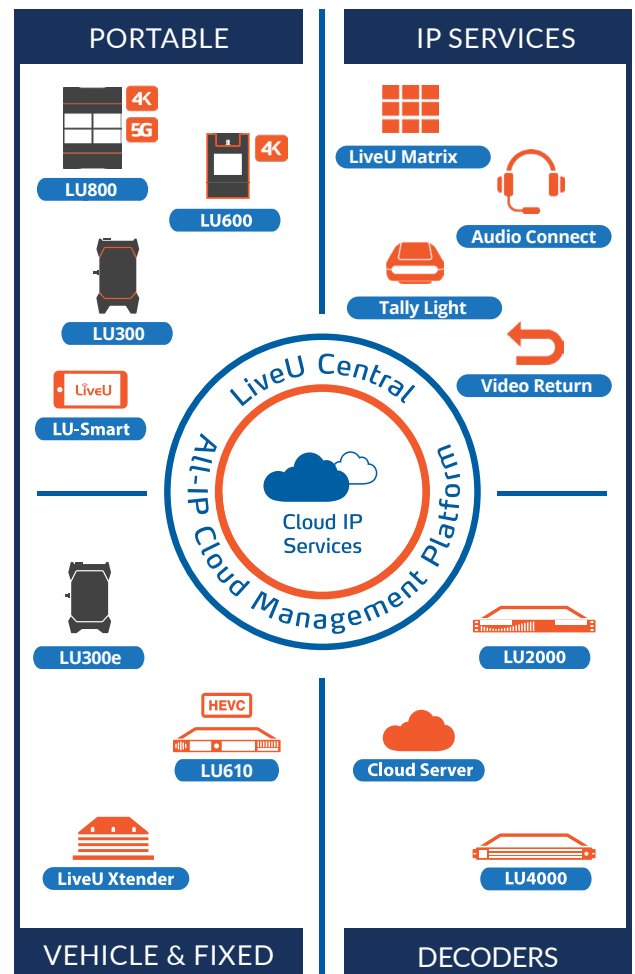
The LiveU Central management platform allows full control and monitoring of the entire LiveU ecosystem and content via any modern browser, from anywhere around the world.

Using the LiveU Central web interface you can remotely control and manage your LiveU field units and channels.

- Manage unit streaming settings: mode, delay, channel selection and start/stop streaming
- View and manage unit's network interfaces, Ethernet ports, WiFi & modems including bandwidth capping capabilities
- Manage IP streaming to social media or CDNs – one click streaming to Facebook
- File Management – preview files, play to SDI or download
- Manage metadata before and after streaming
- Group & user management
- Least-cost bonding – prioritize between different interfaces (e.g. use cellular data before satellite)
- Service management: LU-Smart, Video Return, Tally Light, Audio Connect, IP Pipe, DataBridge, etc.

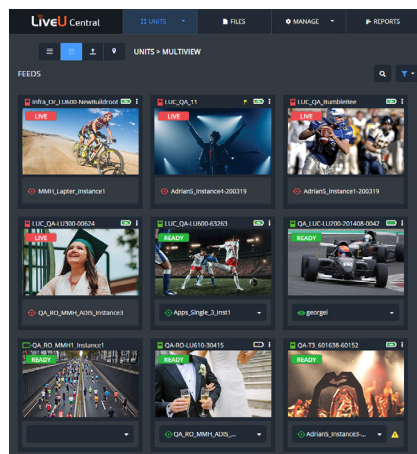
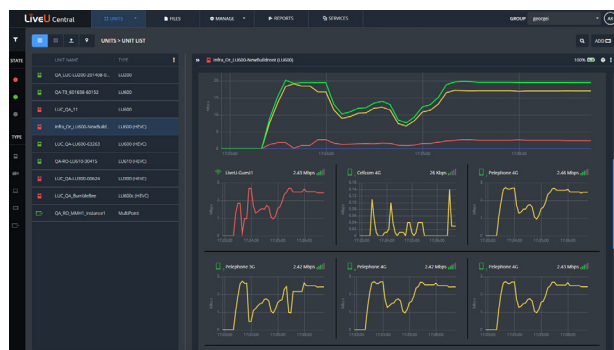
Each LiveU Central user can be assigned with unique account permissions (read only, regular, admin), enabling the management and control of a specific group of devices and channels.

LiveU Central supports Single Sign-On for enhanced system security.



REMOTE CONTROL & MONITORING

Manage all LiveU units from any browser or device. Get a detailed view of unit status, location, network interfaces and bandwidth.

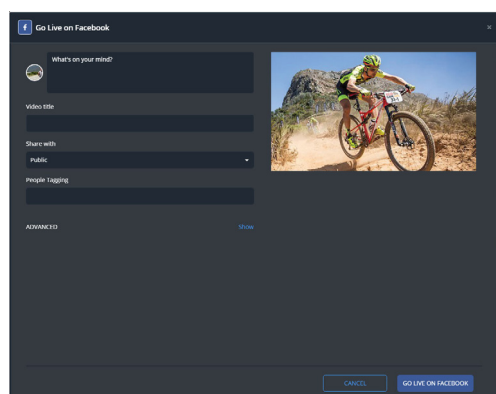
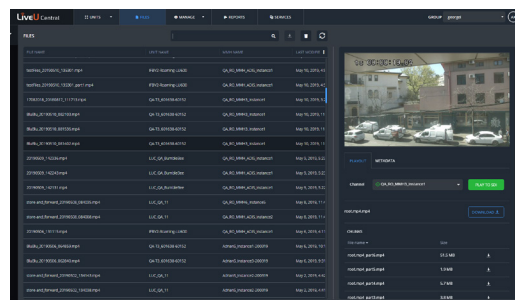


MULTIVIEW

Live preview of all incoming feeds at a glance. Drag & drop any incoming feed to any server output.

FILES MANAGEMENT

- Playback or export of recorded Store & Forward or FTP files, including upload management and tracking
- File upload of remote Live & Store files from LiveU Central
- Files can be played to any SDI port on the server



ONE-CLICK STREAMING TO MAJOR ONLINE PLATFORMS

Direct streaming from LiveU Central to Facebook Live or any other CDN, based on one-click API-based integration

GEO-LOCATION

Track the location of all LiveU units; automatic refresh when unit is online

